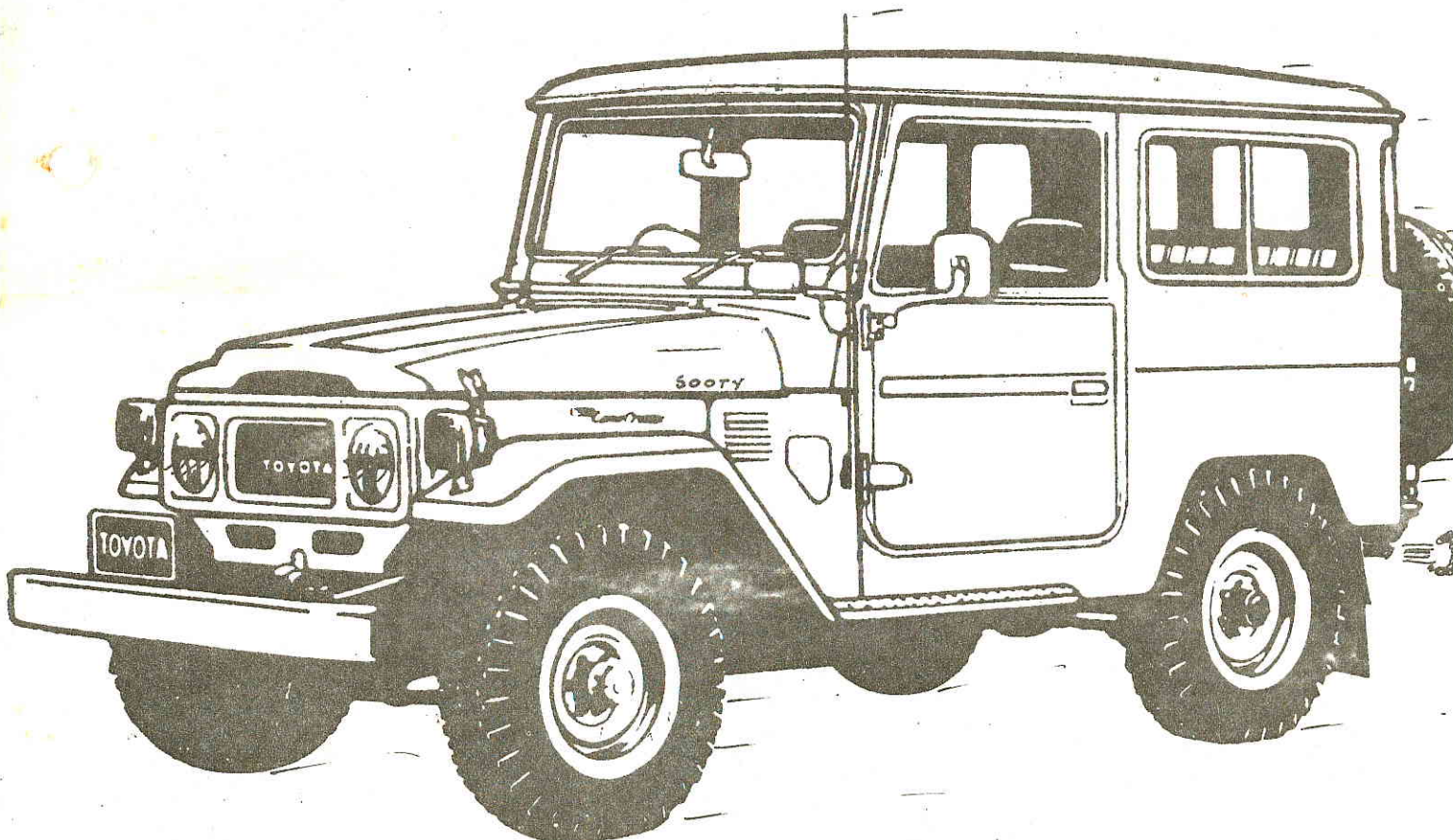


OCT. 1985

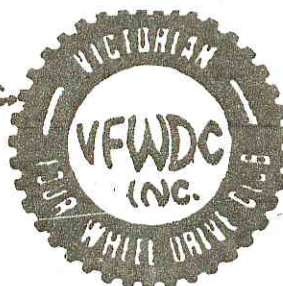
FREE



WHEELING



VICTORIAN FOUR WHEEL DRIVE CLUB INC.



COMMITTEE 1985/86

PRES	David Heard 43 Mortimore St Moorabbin 3189 557 5915	VICE PRES	Pat Casey 11 Patterson St Carnegie 3163 5706452	SEC	Tom Brachna 11 Sunnyvale Hampton Park 3976 799 1998
TREAS	Rob Ayton 8 Minerva Crs Vermont Sth 3133 232 0378	ASS SEC	Garry Pearl 1419 Mountain Hwy The Basin 3154 762 4013	SOC	Sue Williams SEC 182 Cape St. Heidelberg 458 3573
COMMITTEE	Mark Templeton 13 Alice St. Clayton 3168 543 7196	Peter Handley 5 Wallaroo Ave. Narre Warren 3805 704 6808	Bryan West 164 Monohans Rd. Cranbourne 3977 059 96 4915		
ASSOCIATION DELEGATES	Mark Templeton 543 7196 (A.H.)				

TRIP CLASSIFICATIONS:

'A' Grade: Extensive use of 4 WD. Tracks may be difficult to negotiate - chains should be carried along with towing slings and anchor points, good winter tread pattern tyres are a must. Trip leader has the right to refuse vehicle if above points are not met. Types of conditions likely to be met include: steep climbs and descents on all surfaces - rocky, muddy, mud & snow deep river crossings and overgrown tracks. Max. 6 vehicles.

'B' Grade: Virtually same conditions as 'A' Grade but track condition is more favourable. Good tyres are a must as well as necessary recovery gear. Max. 10 vehicles.

'C' Grade: Very limited use of 4 WD. These trips include car rallies etc. Type of tyres do not matter and recovery gear not essential. No. Max vehicle. In all above cases vehicles should be in sound mechanical condition and carry the basic spare part requirements as listed in previous Newsletters.

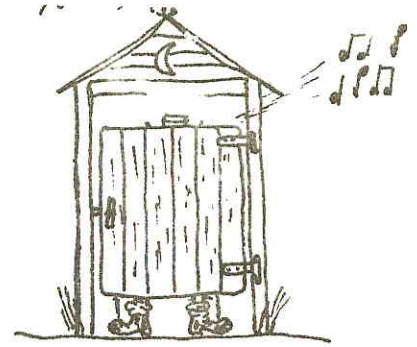
The Committee would like to express the fact that if in the opinion of the trip leader a vehicle is not suitable for a trip, then that vehicle may be refused permission to partake.

Newsletter items to Tom Brachna by General Meetings at the latest.

MEETINGS LAST TUESDAY OF THE
MONTH AT THE DANDENONG LIBRARY

CORRESPONDENCE
P.O. BOX 778
DANDENONG VIC 3175

PAGE de PRESIDENT



P R E S I D E N T ' S R E P O R T O C T O B E R 1985

Most of the club should be back from their holidays by now, if you had holidays that is and I hope everyone enjoyed themselves. I did, even though the old blue beast fell on it's side in the middle of the desert.

Don't forget all the trip reports that will be due by now. Please give them to Lakey, you know, the Big Bloke? Technical notes would also be appreciated; we can't have the same people trying to please you all the time and no doubt there must be some knowledge out there somewhere.

Last meeting's entertainment was provided by Peter Rowe on tea duty, indeed a rare performance, not seen by club members for some time. Pat Casey showed a video of our Simpson Trip, but had a hard act to follow.

Christmas Dinner for the club is now on the 15th November, so get your formal life jackets out of the closet and join us for a great evening. We need 65 people to attend so don't let us down because the club will have to pay and that is your money.

Tom Brachna will lead a trip into the Mac Allister on Cup weekend and you can find more details in this magazine.

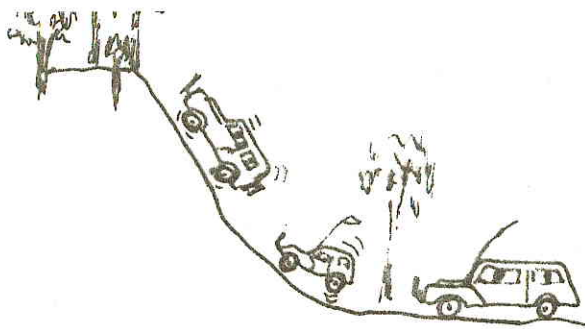
Terry Baker won the raffle at the last meeting, a super-duper tyre guage, with lugs.

See you at the Meeting.

Dave Heard

P.S. Despite all rumours, Yes I am engaged to the wonderful Michelle Currie and yes we have bought a house in Selby so I can get to the meetings earlier.

REPORT de TRIP



Gembrook State Forest Area

Roll call:- Ricky Ryken and girlfriend
Murray Shaw and daughter
Deano Brandi and Kaye
(Boston and Amber)

Met at Berwick Civic Centre Sunday morning 8.30 a.m. Very overcast and bloody cold. Headed up Princes Highway towards Pakenham-three vehicles in all. Turned up Toomuc Valley Road towards Gembrook.

Later on in the morning after a few unsuccessful attempts my faithful Toyota started to make a very loud knocking sound from the engine bay. Murray and myself surveyed the situation and came up with a conclusion that there was a cracked piston.

We then had to take it very easily after that and we headed off and had some lunch and talked a bit.

On our way through the forest we came accross two Hi-Lux's and a very bogged Mitsubishi 4 W.D. Express van. One of the Hi-Luxs was trying to pull out the van with a snatchem strap without any success. After watching them for a short time, I positioned my vehicle and winched the van out of the bog and we made tracks for home.

After saying goodbye to everybody, my faithful Toyota was still mobile until I was about two miles from home. It then S... itself.

A very enjoyable day trip. Thank you Ricky.

Deano.

IT'S AND BITS

Heard somebody rolled on the French Line.

Who welded the Centralian Staff trailer at Purni Bore
and accepted petrol - not beer, as payment?

Dave Heard has finally got engaged. Probably tin kettling
late March '86 at new Selby address.

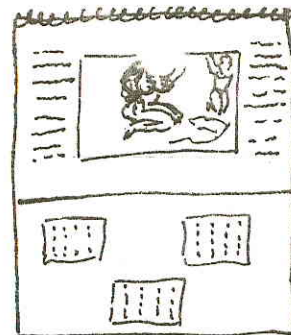
Congrats Dave and Michelle

Navigation Trial

Don't forget the Navigation Trial on Oct 19 - 20th. Start
and campsite near Blackwood. See September magazine for
details and advice on navigation. We would like a good rep-
resentation from the club. Make sure you have a front tow
hook!

Pat would like anyone who can be an official to contact him
on 570 6452.

d' CALENDER



NAVIGATION TRIAL - Wombat State Forest

October 19th & 20th

Campsite start G.R. 634487 Daysford Trentham marked up map.

Itinerary: To navigate over set course according to directions provided. The Otway F.W.D.C. has been invited to participate. For further details contact Pat Casey on 570 6452.

REEVES BEACH FISHING DAY

October 27 - Sunday - C Grade

Meeting Sunday morning 5 a.m. Cranbourne Pub. Proceed to Reeves Beach. Limited sand driving in bushland behind dunes. Fishing available in inlet or surf beach. Fuel available at Yarram. Take lunch and bait. For further information contact Tom Brachna on 799 1998.

MAC ALISTER RIVER

November 2 - 5 B - A Grade

Meeting Saturday 2nd at 8 a.m. Hallam Pub. Proceed through Heyfield to Licola. No Diesel available at Licola. Drive through to Mac Alister River. Base Camp. Fishing, swimming, F.W.driving, walking and relaxing available. Return home approximately 6 p.m. Tuesday. Further enquiries contact Tom Brachna on 799 1998.

THOMPSON VALLEY CLEANUP

November - December

Full details in September Magazine.

CLUB BREAK UP NIGHT

November 15th 1985

For further details see Social page this magazine.

Calendar cont...

KIDS CHRISTMAS PARTY - Bimbimble Wildlife Park

December 8, 1985

Paternoster Road, Mt. Burnet Pakenham Upper Ph: 059 42 7238

Roast beef on a spit, B.B.Q. sausages, soft drinks, rolls, ice-creams, all provided. Father Christmas to make appearance by special request. Hamper raffle. B.Y.O. salads, plates, cutlery, drinks.

OFF-ROAD 4 & 2 WHEEL RECREATION SHOW 1986

February 5th - 9th

Royal Exhibition Buildings, Melbourne.

Le FUNCTION SOCIÁL



Club Break Up Night

This year the end of year break up should go off with a splash! Sue Williams has organised a cruise aboard M.V. Southern Contessa.

The company guarantee calm water so don't be squirmish about cruising. Apparently if the weather is at all lousy, the boat stays in the estuary. The cruise will feature a spit roast, music and a view of the city not usually seen.

Date is: 15th November 1985

Time: 8 p.m.

Cruise duration: 4 hours

Cost approx. \$23.00 per head B.Y.O. drinks

Beat leaves from N. 13 North Warf through security gate.

P.S. All monies to be paid on or before next meeting!

FOR SALE

1983 Toy. Landcruiser S.W.B., P. Steering, 5 spd G/Box,
Disc. Brakes. White with black Bestop. 42,000 kms, Elec.
Trailer Brakes.

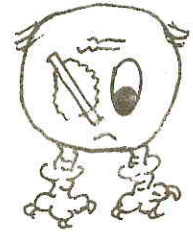
Contact John Lake B.H. 798 6634
A.H. 546 3427

FOR SALE

Range Rover 1974, blue colour, 11 mths reg., good tyres,
Air cond., hood lining drooped, motor boils on trips, no R.W.C.
\$5,500.

Contact Keith Brown A.H. 791 2622
B.H. 586 8588

M. CASEY'S CORNER



C A S E Y ' S C O R N E R

EYE INJURIES

Eye injury is an important and extensive topic. One very common and troublesome form of eye problem is when a foreign body (e.g. dirt or grit) becomes lodged in the eye. You may be able to remove the offending particle by using an eye wash or getting a friend to spot and try and remove it with a cotton bud or cotton wool. There is an instrument in the First Aid Kits (that were recently purchased at the Club) for removing foreign bodies.

Sometimes the foreign body is under the upper lid. If you instruct the patient to look down and then place a match (unlighted) parallel and approximately .5 cm above the edge of the eye lid, you can then roll back the lid over the match and thus expose the under side of the lid when the dirt should be accessible.

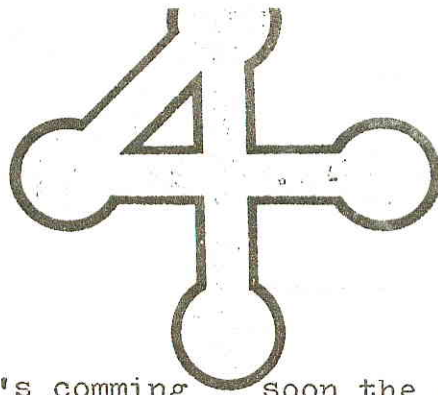
Medical attention should be sought for:-

1. Penetrating eye injuries e.g. steel splinters.
2. Visual disturbances e.g. blurred vision.
3. Inability to remove any foreign body.
4. Pain persists after foreign body removed.
5. If you are concerned at all with your eye.

Note

To pad eye for pain relief, it is necessary to pad both eyes- thus temporarily blinding the patient, which may be distressing. If one eye is left unpadded it will naturally look around and the other will follow it causing more discomfort.

Geelong Four Wheel Drive Club,
P.O. Box 976 ,
Geelong , 3220 .



Dear Secretary,

It's comming soon the Geelong Four Wheel Drive Club's annual combined meeting "FORREST FROLICS 85" . Our club extends an invitation to all your members and friends to attend this years venue which will be held on the 23rd & 24th of november at the Forrest Recreation Reserve, approximately 1.(one) Km. on the Geelong side of Forrest in the Otway Ranges. The basic weekend format will be simular to that of previous meetings with premarked trips through the Otways, monster bonfire on the Saturday night with singing & a bush dance and on Sunday morning a four wheel drive motorkana for all commers . The camp fee has not been finalized as of yet but should be simular to last years which was \$6 per vehicle for the weekend. The camp site has hot showers and adequate toilet facilities are located around the grounds, unfortunatley there is no power available for campers with caravans. The Geelong Four Wheel Drive Club looks forward to the company of new Forrest visitors and previuas veterans and anticipate to provide a great weekend . Further information regarding this venue will be following at a later date .

Yours thankfully,

D. Dixon.

David Dixon.

Secretary.

GEELONG
4WHEEL
DRIVE
CLUB



LAND-ROVER OWNERS' CLUB OF VICTORIA LIMITED

Incorporated
in Victoria

"Land-Rovering since 1963"

The longest established four-wheel-drive club in Australia.

P.O. Box 8, Abbotsford, Victoria, 3067.

1st August 1985

The Secretary,
Victorian 4WD Club
P.O. BOX 778,
DANDENONG VIC. 3175

Dear Secretary,

1985 FOUR WHEEL DRIVE MOTORSHOW AND FIELD DAY

On Sunday 17th November 1985, the Land Rover Owners' Club of Victoria Ltd., will be holding its eighth annual 4WD Motorshow and Field Day.

Your Club is invited to attend on the day to promote your Club and its recreation, 4WD Touring. An area, 10 metres square, will be set aside for your Club in the centre of the Oval, adjacent to other 4WD Clubs, free of charge to your Club.

This year it is not possible for Clubs to be next to Commercial Exhibitors around the perimeter of the Oval. Also, no business or company may be promoted on a Club display site, nor vehicles offered for sale or any goods, with the exception of Club originated goods, such as clothing with the Club logo printed upon it, or radiator badges etc.

A site, 10 metres square, will only comfortably hold 3 vehicles. Your Club's nominated 3 vehicles only will be allowed on to the oval. These must be in position by 10.00 a.m.

To guarantee your site, the attached form must be completed and returned by 31st August 1985.

Further information can be obtained from Peter Dunn on 03-277 0834 after hours.

Yours faithfully,

PETER DUNN
Field Day Co-Ordinator

Stop press... October 85.

FROM THE:- GOULBURN VALLEY FOUR WHEEL DRIVE CLUB.

TO ALL FOUR WHEEL DRIVE CLUBS AND FRIENDS WE AGAIN
INVITE YOU TO JOIN US FOR OUR

7th annual

boho bounce... to be held on the 25th, 26th, + 27th of October.....

AT THE USUAL SPOT: MYRA PARK, SIEMS RD. CREEK JUNCTION ^{IN THE} STRATHBOISE BLK'S
(PTD. FOR MAP.)

CAMPING IS AVAILABLE FROM FRIDAY FOR THE WEEKEND!

FOR YOUR ENJOYMENT ON SATURDAY WE HAVE ORGANISED AN
OBSERVATIONAL EXERCISE, CONDUCTED 4.W.D. TOURS, B.B.Q TEA
& TO ROUND OFF THE DAY OUR "FAMOUS WOOLSHED" DANCE.

TO COVER THE COST OF THE MEAL & DANCE A FEE OF
\$10.00 PER ADULT WILL BE CHARGED, WITH CHILDREN UNDER 16 FREE!

SUNDAY WILL SEE THE TURNUS OF THE "QUARRY EVENT". THIS YEAR
WITH ADDED SECTIONS FOR VARYING TYPES OF VEHICLES. THIS EVENT
IS TO FINISH AROUND LUNCH TIME TO ALLOW TIME TO COLATE THE
POINTS FOR APPROX 3.00 PM. PRESENTATION.

ANY VEHICLE ENTERING THE QUARRY AREA WITHOUT A 'BOUNCE
STICKER' WILL BE SUBJECT TO A \$2.00 DONATION.

WE WOULD APPRECIATE IF YOU COULD NOTIFY US OF NUMBERS
COMING BY WEDNESDAY 23rd OCTOBER TO ASSIST WITH CATERING.

MAIL TO: P.O. BOX 652, SHEPPARTON, 3630 OR PHONE KATH & JAN LOCKING 0588 219188

PS... THE Fuel Tanker

WILL BE ON SITE
ALL WEEKEND!

Cold weather operation of diesel engines

Diesel engines in Australia operate on distillate fuels. These are produced in the refinery by a distillation process in which petroleum is separated into component fractions according to their boiling ranges. The fractions are first vaporised, then condensed.

Diesel fuels are made up of a complex range of hydrocarbons within a required boiling range. These hydrocarbons vary in freezing point, and those with limited solubility begin to fall out of solution in the form of wax as the fuel temperature falls. The degree of fall-out of this wax will depend upon the distillation range of the fuel and the type of crude oil from which the fuel has been produced.

The temperature at which the wax begins to separate (and is visible as a haze) from a diesel fuel on cooling is known as the *cloud point*. If the fuel is further cooled, a temperature is reached where there are sufficient waxes out of solution to form a structure preventing the fuel from flowing. This temperature is known as the *pour point*.

In Australia, although winter temperatures in the colder regions are generally not as severe as in many other parts of the world, some problems can arise from low temperature thickening of diesel fuels due to wax formation. These problems can occur in fuel storage tanks and supply lines in the fuel and lubricating systems of diesel equipment.

Precautions should therefore be taken by diesel equipment operators, where possible, to prevent fuel in storage tanks and in engine fuel systems from falling below the critical pour point.

Some suggested ways of achieving this are set out on the other side.

tech
data 11



Australian Institute
of Petroleum Ltd

SPECIAL NOTE:

- Always examine the engine's crankcase oil dip stick before starting. If the oil is not in a fluid condition, the engine should not be started until the condition has been rectified.

FUEL STORAGE SYSTEMS

- Storage tanks and fuel lines should be protected by water-proofed insulation where possible. Ideally, storage tanks should be buried underground. Pipe-work should be installed without sharp bends or constrictions.
- It is most important to ensure that the fuel take-off point is well above the bottom of the storage tank, to avoid picking up water and other foreign material which may have accumulated in the tank bottom. It is recommended that regular draining of the tank-bottoms be carried out, particularly at the beginning of the winter season.

EQUIPMENT SERVICING

- Fuel filters should be serviced regularly in accordance with the equipment manufacturer's instructions.
- The equipment's fuel storage tank should be drained regularly to remove water and other sediment, and always before the onset of winter.

OPERATIONAL PRECAUTIONS

- Exposed vehicle or machine fuel tanks, fuel lines and filters should be protected by insulation or with a suitable covering, such as a tarpaulin, while the engine is shut down.
- If possible, shelter the equipment or machine behind a wall, windbreak or earthbank away from prevailing cold

winds. If fuel starvation should occur as a result of waxing, take the following action:—

- Change the fuel filter element.
- If possible, warm the fuel system in order to dissolve the wax and melt any ice.

It may be practical to have fitted to the equipment a small auxiliary tank in which a blend of up to fifty per cent of heating oil with distillate is stored. Switching from the main fuel tank to the auxiliary fuel tank about five minutes before engine shutdown will prime the fuel system with this fuel and assist with cold engine start-up. This is common practice in the cold regions of the U.S.A.

DIESEL ENGINES/CRANKCASE LUBRICATION

Cold temperature diesel engine operation can lead to engine lubrication problems. Lubricants for diesel engines do not in themselves have a wax content problem. Lubricants marketed in Australia and which are recommended by the engine manufacturer for winter operation will flow and perform well in any degree of cold likely to be encountered. However operational problems can arise if crankcase lubricants are excessively contaminated by partly burned diesel fuel containing wax, in a process known as *fuel dilution*. Fuel dilution of a lubricant occurs to some extent in all diesel engines. It is a mechanical feature of the engine and can be affected by the particular engine design. Some unburned or partly burned fuel will pass the piston rings during normal operation, and if the engine is in poor condition or maladjusted, the amount of dilution increases. Dribbling injectors or excessive fuelling

may also transfer raw fuel to the lubricant and this is often the reason for high dilution of the lubricant. Cases have been observed of crankcase lubricants diluted with up to twenty or thirty per cent of partly burned diesel fuel containing wax.

The main difficulty is that this wax, transferred with the fuel, can reduce the ability of the crankcase lubricant to flow in a cold start-up situation. Usually it has no adverse effect when the engine and the oil are at working temperature. Damage can occur in that short and critical warm-up period in an engine starved of normal lubrication.

MINIMISING DILUTION

To minimise dilution of crankcase oil, the following steps may be taken:—

- Change the engine oil at the onset of winter, using the grade of lubricating oil recommended by the engine manufacturer for winter operations. Not only does it make starting easier, but it has a greater capacity to accept wax before gelling is likely.
- Change the engine oil at intervals no longer than those recommended for the prevailing operating conditions, and more frequently in old equipment in poor condition.
- Avoid prolonged idling.
- Maintain fuel systems by following the manufacturer's recommendation for maintenance of fuel system components. In particular, check all mechanical components likely to produce unburned fuel. Examine the condition of fuel injectors and pump, any restriction to the air filter, or a run-down battery causing a low cranking speed.

Data prepared by AIP's
Petroleum Products
Technical Committee

Tech Data 11/April 1981
KJ 12M 480



Australian Institute
of Petroleum Ltd

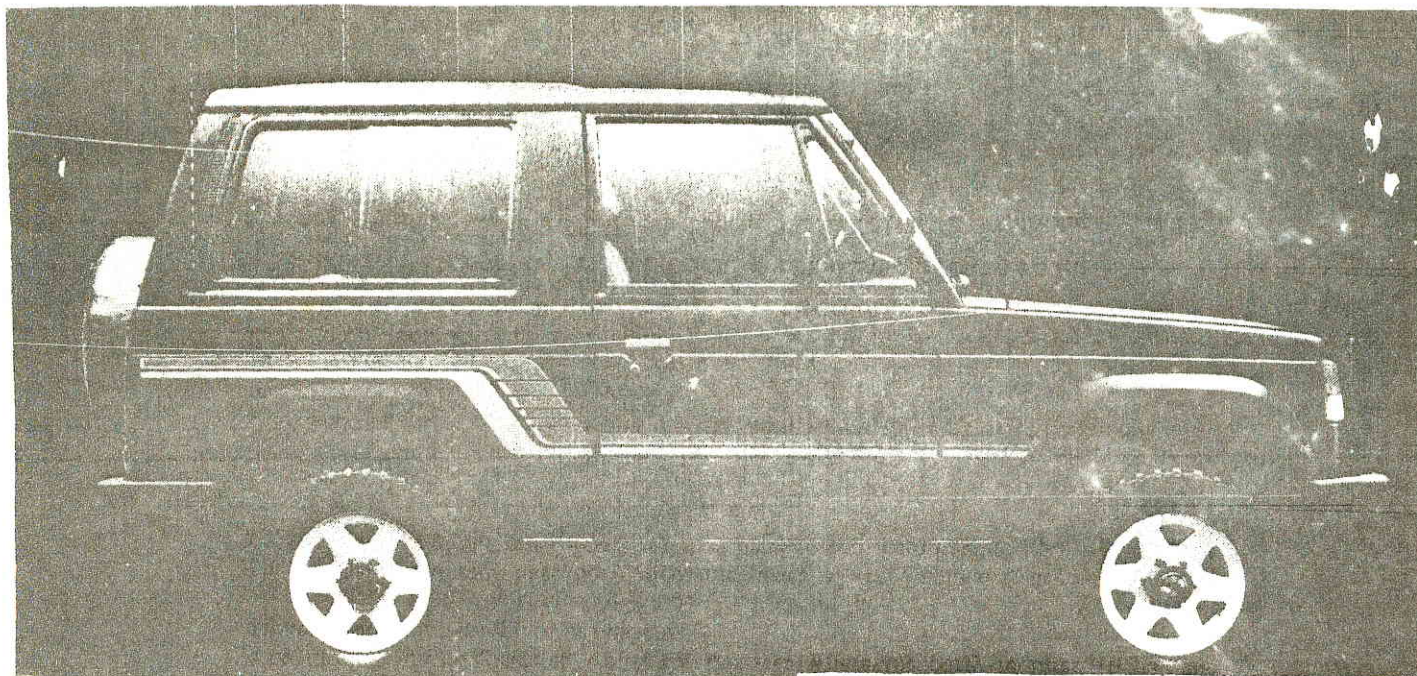
Wales Corner
227 Collins Street,
Melbourne, Victoria 3000.
Telephone (03) 632756
Telex 33421

A V. F. W. D. C., INC. TOURING CENSUS

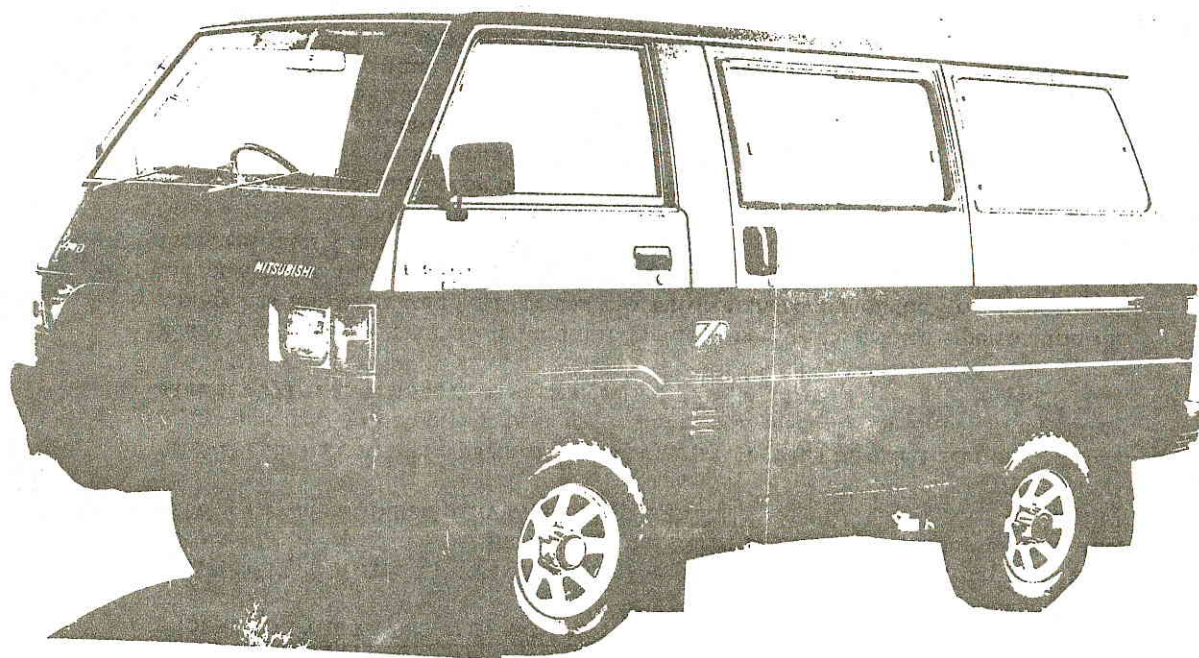
NAME:

VEHICLE:	<input type="checkbox"/> Toyota <input type="checkbox"/> Nissan <input type="checkbox"/> Landrover <input type="checkbox"/> Rangerover <input type="checkbox"/> Mitsubishi <input type="checkbox"/> Suzuki <input type="checkbox"/> Jackaroo <input type="checkbox"/> F100 <input type="checkbox"/> Bronco <input type="checkbox"/> Other								
TYPE & DESCRIPTION OF TRIP REQUIRED FORMAT	<table border="0"> <tr> <td>Classification</td> <td>Duration</td> <td>Area</td> <td>Format</td> </tr> <tr> <td> <input type="checkbox"/> A <input type="checkbox"/> B <input type="checkbox"/> C </td> <td> <input type="checkbox"/> Day <input type="checkbox"/> Weekend <input type="checkbox"/> Long Weekend <input type="checkbox"/> Extended </td> <td> <input type="checkbox"/> Alps <input type="checkbox"/> Desert <input type="checkbox"/> Beach <input type="checkbox"/> Snow </td> <td> <input type="checkbox"/> Base <input type="checkbox"/> Mobile <input type="checkbox"/> Trials <input type="checkbox"/> Social </td> </tr> </table>	Classification	Duration	Area	Format	<input type="checkbox"/> A <input type="checkbox"/> B <input type="checkbox"/> C	<input type="checkbox"/> Day <input type="checkbox"/> Weekend <input type="checkbox"/> Long Weekend <input type="checkbox"/> Extended	<input type="checkbox"/> Alps <input type="checkbox"/> Desert <input type="checkbox"/> Beach <input type="checkbox"/> Snow	<input type="checkbox"/> Base <input type="checkbox"/> Mobile <input type="checkbox"/> Trials <input type="checkbox"/> Social
Classification	Duration	Area	Format						
<input type="checkbox"/> A <input type="checkbox"/> B <input type="checkbox"/> C	<input type="checkbox"/> Day <input type="checkbox"/> Weekend <input type="checkbox"/> Long Weekend <input type="checkbox"/> Extended	<input type="checkbox"/> Alps <input type="checkbox"/> Desert <input type="checkbox"/> Beach <input type="checkbox"/> Snow	<input type="checkbox"/> Base <input type="checkbox"/> Mobile <input type="checkbox"/> Trials <input type="checkbox"/> Social						
TIME OF YEAR	<table border="0"> <tr> <td> <input type="checkbox"/> January <input type="checkbox"/> February <input type="checkbox"/> March <input type="checkbox"/> April <input type="checkbox"/> May <input type="checkbox"/> June <input type="checkbox"/> July <input type="checkbox"/> August <input type="checkbox"/> September <input type="checkbox"/> October <input type="checkbox"/> November <input type="checkbox"/> December </td> </tr> </table>	<input type="checkbox"/> January <input type="checkbox"/> February <input type="checkbox"/> March <input type="checkbox"/> April <input type="checkbox"/> May <input type="checkbox"/> June <input type="checkbox"/> July <input type="checkbox"/> August <input type="checkbox"/> September <input type="checkbox"/> October <input type="checkbox"/> November <input type="checkbox"/> December							
<input type="checkbox"/> January <input type="checkbox"/> February <input type="checkbox"/> March <input type="checkbox"/> April <input type="checkbox"/> May <input type="checkbox"/> June <input type="checkbox"/> July <input type="checkbox"/> August <input type="checkbox"/> September <input type="checkbox"/> October <input type="checkbox"/> November <input type="checkbox"/> December									
NUMBER OF MEMBERS PRE-FERRED ON TRIP	<input type="checkbox"/> 10 or under <input type="checkbox"/> Ten or over <input type="checkbox"/> Family <input type="checkbox"/> Boys <input type="checkbox"/> Girls								
EQUIPMENT AVAILABLE	<input type="checkbox"/> Winch <input type="checkbox"/> Chains <input type="checkbox"/> Chainsaw <input type="checkbox"/> Generator <input type="checkbox"/> Hilift <input type="checkbox"/> Snatchums <input type="checkbox"/> Axe								
FUEL CAP. & DIST	<table border="0"> <tr> <td> <input type="checkbox"/> 100-300 round trip <input type="checkbox"/> 300-700 <input type="checkbox"/> 700& over </td> <td> Fuel Capacity: <input type="checkbox"/> 50 - 100 <input type="checkbox"/> 100 - 200 <input type="checkbox"/> 200 and over </td> </tr> </table>	<input type="checkbox"/> 100-300 round trip <input type="checkbox"/> 300-700 <input type="checkbox"/> 700& over	Fuel Capacity: <input type="checkbox"/> 50 - 100 <input type="checkbox"/> 100 - 200 <input type="checkbox"/> 200 and over						
<input type="checkbox"/> 100-300 round trip <input type="checkbox"/> 300-700 <input type="checkbox"/> 700& over	Fuel Capacity: <input type="checkbox"/> 50 - 100 <input type="checkbox"/> 100 - 200 <input type="checkbox"/> 200 and over								
ACTIVITIES	<input type="checkbox"/> Driving <input type="checkbox"/> Fishing <input type="checkbox"/> Sightseeing <input type="checkbox"/> Socialising <input type="checkbox"/> Wildlife <input type="checkbox"/> Swimming <input type="checkbox"/> Cooking <input type="checkbox"/> Hunting <input type="checkbox"/> Photography								
SOCIAL FUNCTIONS	<input type="checkbox"/> Rest <input type="checkbox"/> Wine Tasting <input type="checkbox"/> Pokies <input type="checkbox"/> Picnics <input type="checkbox"/> Car Rallies								
DO YOU WISH TO LEAD TRIP	<input type="checkbox"/> Yes <input type="checkbox"/> No <input type="checkbox"/> Possibly								

ANY FURTHER COMMENTS
OR SUGGESTIONS:



MITSUBISHI PAJERO 4WD
Every drive is an adventure.



BREAKTHROUGH IN 4WD MOTORING

FOR INFORMATION OR SPECIFICATIONS CALL PETER CORRIGAN AT:

Preston Motors Mitsubishi
1511 Sydney Road,
Campbellfield, 3061
Phone: 359 3999



BUSH.B.Q



THE BARBEQUE OF THE OUTBACK

simple
highly efficient

strong

compact

open fire cooking

versatile

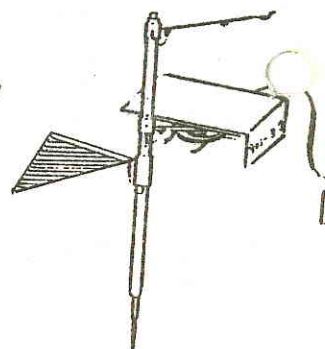
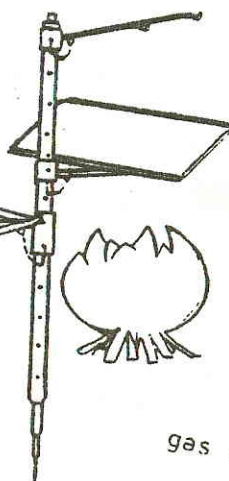
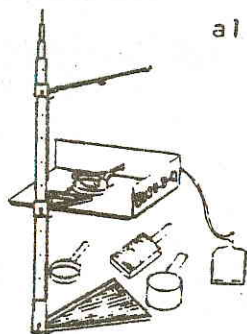
gas conversion

realistically priced

mesh griller

fully engineered
all steel construction

indoor/outdoor



ENQUIRIES BUSH B.Q.
9 CORONATION ST.
MT. WAVERLEY, VIC. 3149



PHONE
03 288 1200